



International Conference on  
**RADIOECOLOGY & ENVIRONMENTAL  
RADIOACTIVITY**

15–20 June 2008  
Bergen, Norway

**FIRST ANNOUNCEMENT**

# International Conference on **RADIOECOLOGY** & **ENVIRONMENTAL RADIOACTIVITY**

15–20 June 2008 | Bergen, Norway

## Organized by

Norwegian Radiation Protection Authority (NRPA) and  
Institut de Radioprotection et de Sûreté Nucléaire (IRSN)

in co-operation with

International Atomic Energy Agency (IAEA)

International Union of Radioecology (IUR)

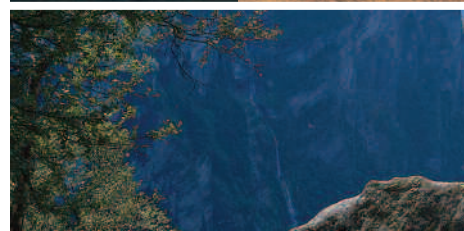
International Commission on Radiological Protection (ICRP)

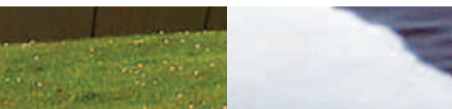
Organisation for Economic Co-operation & Development (OECD)

Nuclear Energy Agency (NEA) and

Journal of Environmental Radioactivity (JER)

The Conference will build upon "ECORAD" and the "International Conference on Radioactivity in the Environment" and will be organized every 3<sup>rd</sup> year, to review and discuss recent achievements in radioecology and related disciplines, and to promote continued development in these subjects. The International Conference on Radioecology and Environmental Radioactivity 2008 will cover the acquisition of basic scientific knowledge as well as identifying new societal needs and requirements for regulators and industry. This will include predicting the consequences of all sources of radioactivity; industrial, (enhanced) natural, accidental and potential. Helping to design appropriate emergency preparedness routines will be another focus area, as well as supporting the development of laws and regulations that protect man and ecosystems from the effects of radiation. The conference will be a key forum for researchers, industry, regulators and experts for whom radioactivity in the environment is an interest area.





## The list of conference themes includes:

### ENVIRONMENTAL PROTECTION

- flux & pathways
- bioavailability over time
- ecotoxicology
- harmonisation of methods for radionuclides and other contaminants
- links with regulation and regulatory trends
- measurement techniques and monitoring strategies

### RISK ASSESSMENT

- ecological impacts of radiation
- biological effects of radiation on biota and humans
- impact of multiple stressors
- ecological risk assessment methods

### EMERGENCY PREPAREDNESS AND REHABILITATION

- accident scenarios
- impact assessment
- remediation actions
- rehabilitation

### TENORM/NORM INCLUDING RADON

- exposure pathways
- management options
- regulatory perspectives
- measurement & monitoring

### RADIOACTIVE WASTE

- exposure
- decommissioning
- remediation
- the geosphere-biosphere interface
- application of radioecological models to safety assessment of nuclear waste repositories

### RADIATION IN SOCIETY

- social, economic & ethical aspects of radiological protection
- stakeholder involvement



"STAATSRaad LEHMKUHL" © Bergen Tourist Board/Per Nybø



## Conference Structure and Deadlines

The main conference sessions will be comprised of selected oral presentations. Sessions will also be included for short oral presentations of selected posters. A poster exhibition will be arranged for all accepted posters.

### Call for papers

Abstracts, not exceeding 500 words, should be submitted to the conference organizers before **15 August 2007**. These abstracts will be reviewed by the scientific committee and authors will be notified whether or not their abstracts have been accepted before **1 December 2007**. Authors of accepted abstracts will be asked to submit extended abstracts for inclusion in the Book of Abstracts before **1 March 2008**.

Please send your abstract before **15 August 2007** to Torun Jølle, NRPA by e-mail to [torun.jolle@nrpa.no](mailto:torun.jolle@nrpa.no) or via the website <http://www.risques-chroniques.com/Radioecology2008>

## Post-Conference publication and Proceedings

A selection of papers will be published in a special issue of the Journal of Environmental Radioactivity after the conference is finished. Further, all other accepted papers will be published in a Proceedings book within Radioprotection Colloque series, after standard peer review.

## Conference Language

The conference will be held in English. All presentations should therefore be prepared in English.

## Conference Fee

The conference fee will cover a copy of the compiled abstracts of presentations; lunches, coffee breaks and the conference reception which will be on Sunday 15 June 2008. The organiser has the pleasure of inviting the participants on an excursion around the Bergen's fjord archipelago on board the old sail ship «STATSRAAD LEHMKUHL». The trip will include a seafood meal.

### Paid before 1 March 2008

EURO 600

EURO 500 (students)

### Paid after 1 March 2008

EURO 700

EURO 600 (students)

## Young Investigator's Award

To encourage young scientists to participate in the conference a young investigators award program has been established in association with the conference. Four 1200 EURO travel awards and a diploma will be granted to young investigators submitting high quality manuscripts. In order to be considered, a candidate must:

- Provide documentation that they are either currently enrolled as a student, or have completed a PhD within the last five years
- Submit a senior-authored manuscript (seven-page limit) for consideration
- The manuscript must be received by **1 March 2008**

Selection will be based on scientific quality of the manuscript. Each manuscript will be evaluated according to the following criteria:

- The paper advances the state of knowledge in an area of science promoted at the conference

- The research idea is innovative and has interdisciplinary implications
- The study design is of high quality
- The discussion section is clear
- The conclusions are well supported by the data presented

## Time and Venue

The Conference will take place in Bergen, Norway  
15 - 20 June 2008, at the Radisson SAS Hotel Norge

## The Gateway to the Fjords of Norway

Welcome to Bergen, the old city with a young outlook. A city with its feet in the sea, its head in the skies and its heart in the right place – full of infectious enthusiasm, and happy to share it with visitors. Bergen is surrounded by one of the world's most spectacular tourist attractions – The Norwegian Fjords, which have now been included on UNESCO's World Heritage List. Bergen is the gateway to the fjords - it's the fjords' "capital city".

The sea has carved itself through and across Norway's long coastline and has given us nature in many facets. Here waterfalls tumble down the mountainsides, here eternal snows glitter on the mountain tops, here bright grass softens the fjord edges. In spring, blossoming fruit trees throw a lacy carpet over the landscape.

This is a land of contrasts. From the soft and gentle, to the harsh and untamed. Tiny fertile villages strung like glowing green pearls along the fjordline, and indomitable fishing communities clinging to rocky outcrops with the wild ocean crashing all around. Between the world's longest fjord and one of the world's most beautiful - that is the Sognefjord and the Hardangerfjord - lies Bergen - which is the gateway to exploring this beautiful natural area.

## One city - endless opportunities

Bergen may not be a particularly large city by European standards, but it nevertheless has plenty to offer those who want to experience something new. Simply bursting with vitality, Bergen is not to be missed! Here, history and long-standing traditions are as important as the city's vibrant cultural life. The Hanseatic legacy goes hand-in-hand with the status of European City of Culture (2000), both of which are reflected in the cityscape. In the global scheme of things, Bergen is a truly unique city. The main reason for this is its wonderful location and world-famous surroundings: the seven great mountains and the fjords go towards creating an international and yet completely idiosyncratic atmosphere, which is sure to make a lasting impression on all who visit Bergen. [www.visitbergen.com](http://www.visitbergen.com)

## Organizing company

for all matters pertaining to fees, travel & accommodation:

### Thue & Selvaag Forum AS

P.O. Box 14  
2601 Lillehammer  
Tel.: +47 61 28 73 20  
Fax: +47 61 28 73 30  
[ICRER2008@tsforum.no](mailto:ICRER2008@tsforum.no)

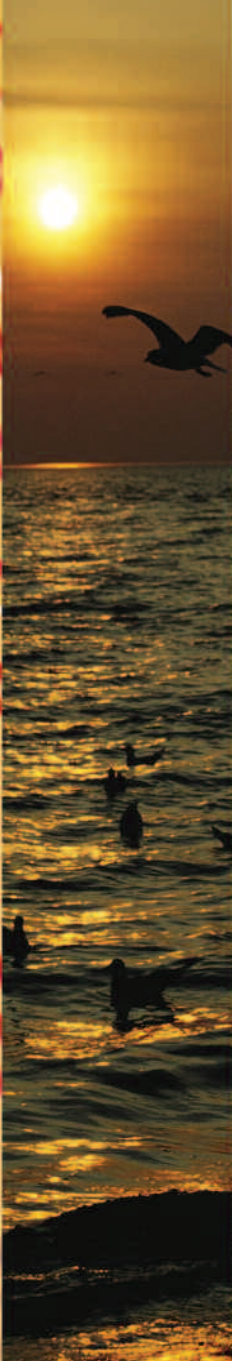
## Conference Executives

Chair: Per Strand (NRPA)  
Co-chair: Jean-Claude Barescut (IRSN)

For further details and to express your initial interest, please contact the Conference Secretary:

Torun Jølle Tel. +47 67 16 26 30  
NRPA [torun.jolle@nrpa.no](mailto:torun.jolle@nrpa.no)  
P.O. Box 55 [www.radioecology.info](http://www.radioecology.info)  
NO-1332 Østerås, Norway







[www.radioecology.info](http://www.radioecology.info)  
[www.tsforum.no](http://www.tsforum.no)